

Pine Gardens

Pine Gardens in Horley is an exclusive development of just two detached, five-bed executive homes. These generously proportioned homes feature Earlswood Homes award winning high-level specification throughout. Ideally situated within walking distance to Horley station, the town centre, and the large recreation ground, these homes would be perfect for both young families and those commuting to the city and beyond.



Earlswood Homes is an award winning, privately-owned property development company that focuses on delivering high quality homes in desirable locations.

Established in 2006, our company has grown organically and is currently on schedule to construct in excess of 300 properties per annum by 2023.

Our business is driven by a strong desire to be recognised as a forward thinking developer that places a strong emphasis on delivering high quality design and a superior customer experience.

The Old Mill Kings Mill Lane South Nutfield Surrey RH1 5NB

T: 01737 760440

sales@earlswoodhomes.com

www.earlswoodhomes.com

List Prices

Plot No.	House Type	List Price	Off Plan	Sqft
Plot 1	5 Bed Detached, Single Garage, Study	£689,950	£674,950	1,917
Plot 2	5 Bed Detached, Study, Family Room	Sold	Sold	1,922

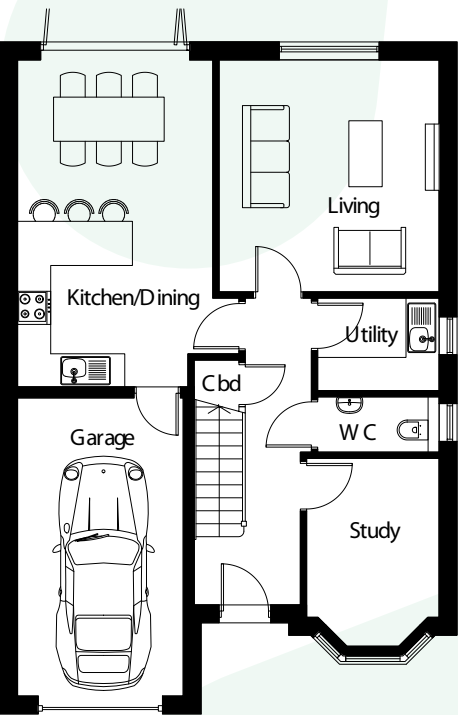
Sqft includes integral garage to Plot 1, single garage = 180sqft

Carpets included for Asking Price reservations during off plan period
Kitchen choice during off plan period

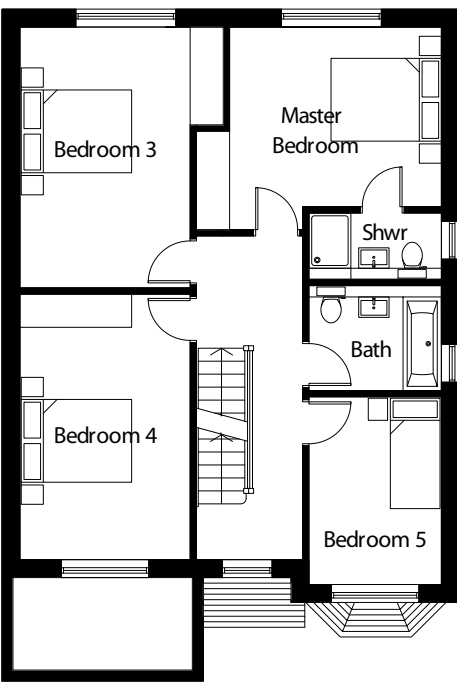
£ 2,000 deposit deposit

Completion date January 2021

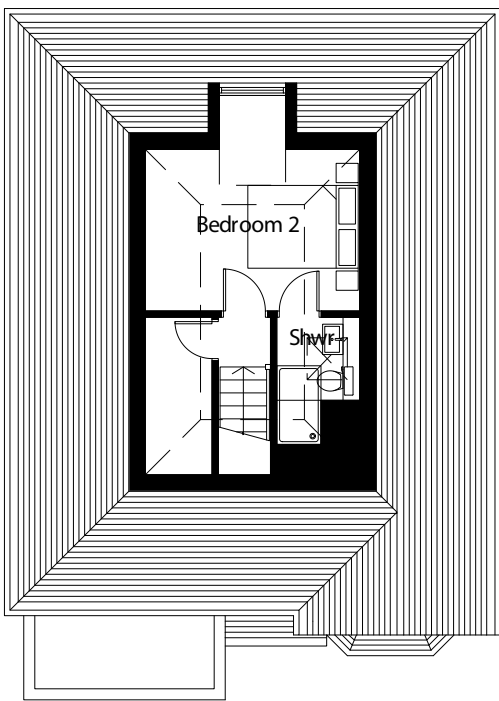
Plans



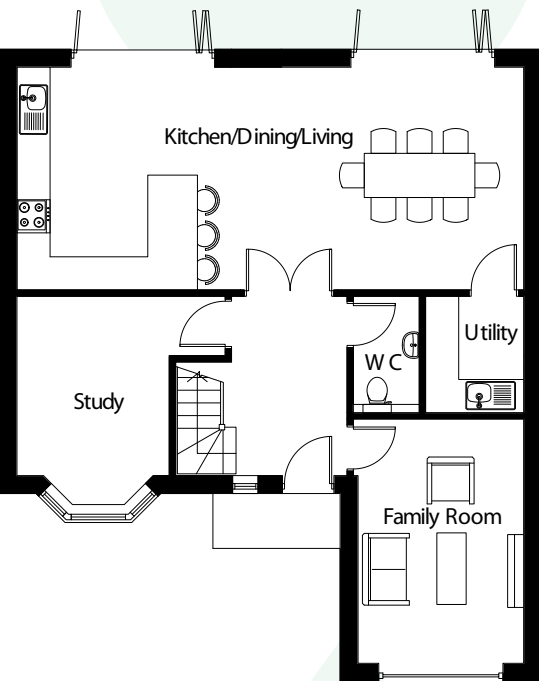
Ground
PLOT 1 - 5 BED
178 SQM / 1,917 SQFT (INC. GARAGE)



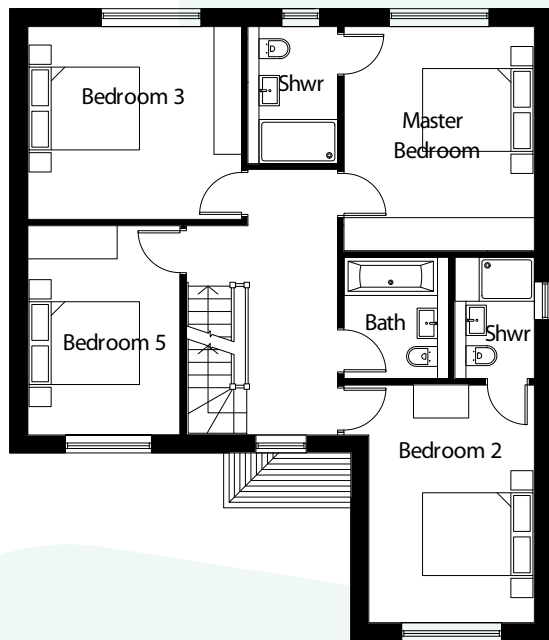
First



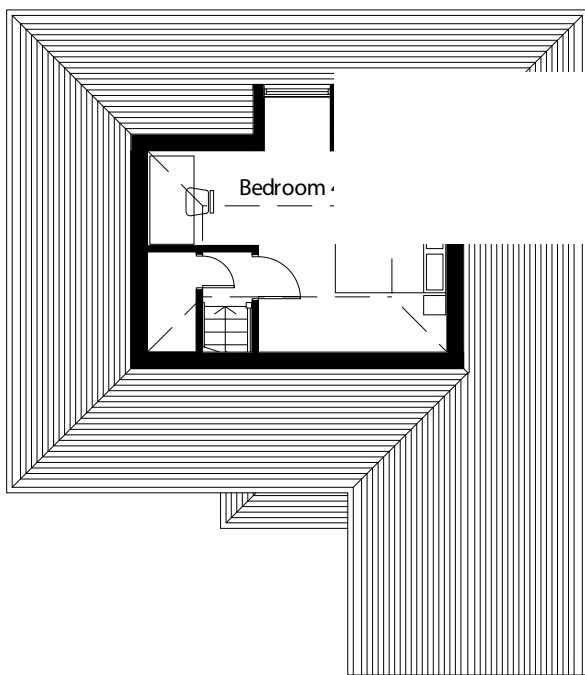
Second



Ground
PLOT 1 - 5 BED
179 SQM / 1,922 SQFT



First



Second